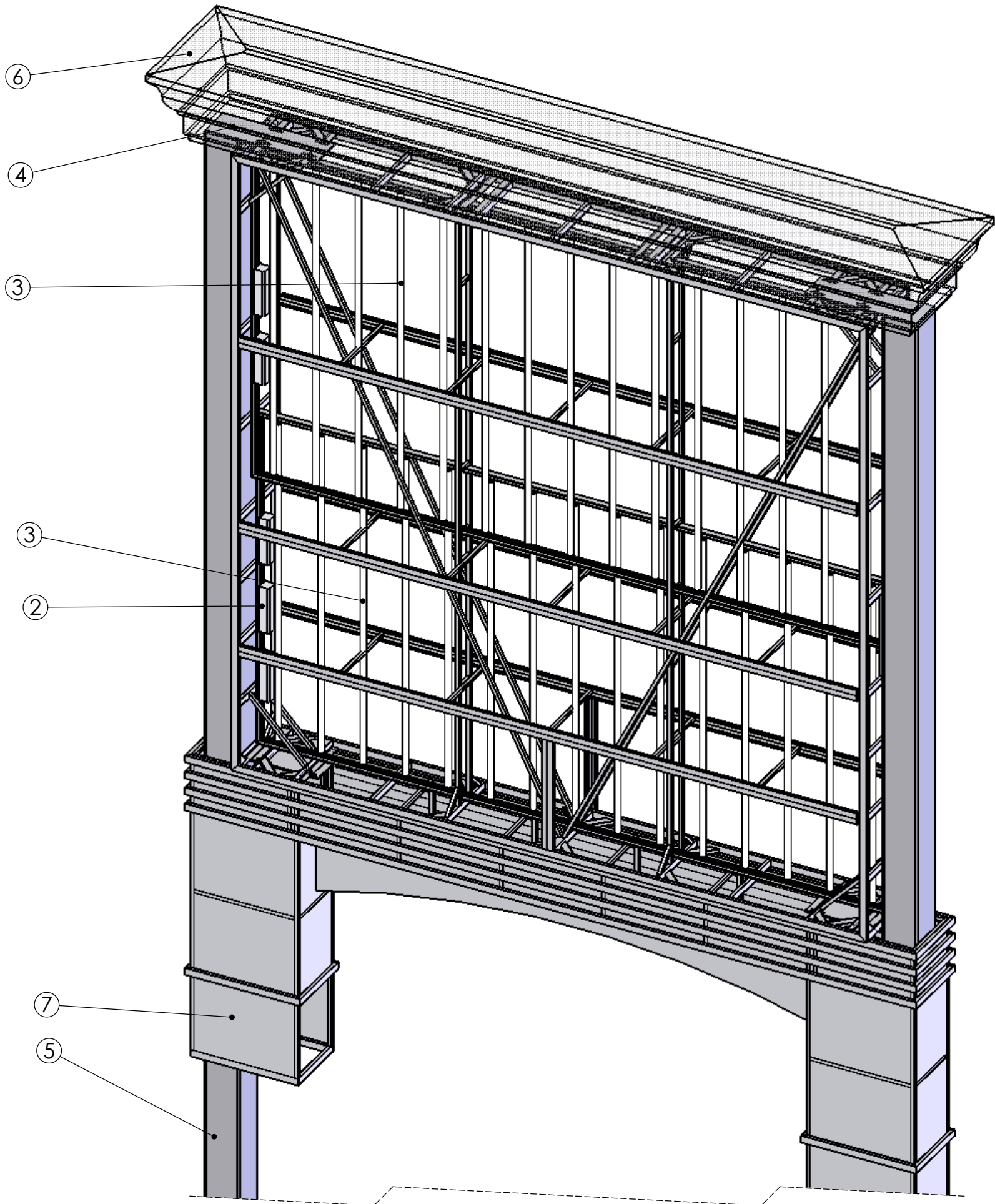


ITEM NO.	DESCRIPTION	PART NUMBER	QTY.
1	Structure	C7559-B-01-00	1
2	Ballast	EESB-1048-26L	5
3	Lamp + KULKA Socket 582/583	96"	30
4	Steel Plate	C7559-B-02-02	2
5	Steel Square Tube	TS10x10x0.3125x394	2
6	Foam Cap	C7559-A-07-00	1
7	Pole Cover	C7559-B-04-00	1

NOTES:

- 3 1/8" ABC Retainer, matching the divider bars, to be used.
- The surfaces of the dissimilar material to be seperated with vinyl to prevent direct contact.



REVISIONS				
ZONE	REV.	DESCRIPTION	DATE	APPROVED
	A	Changed the pole cover	3/17/2006	

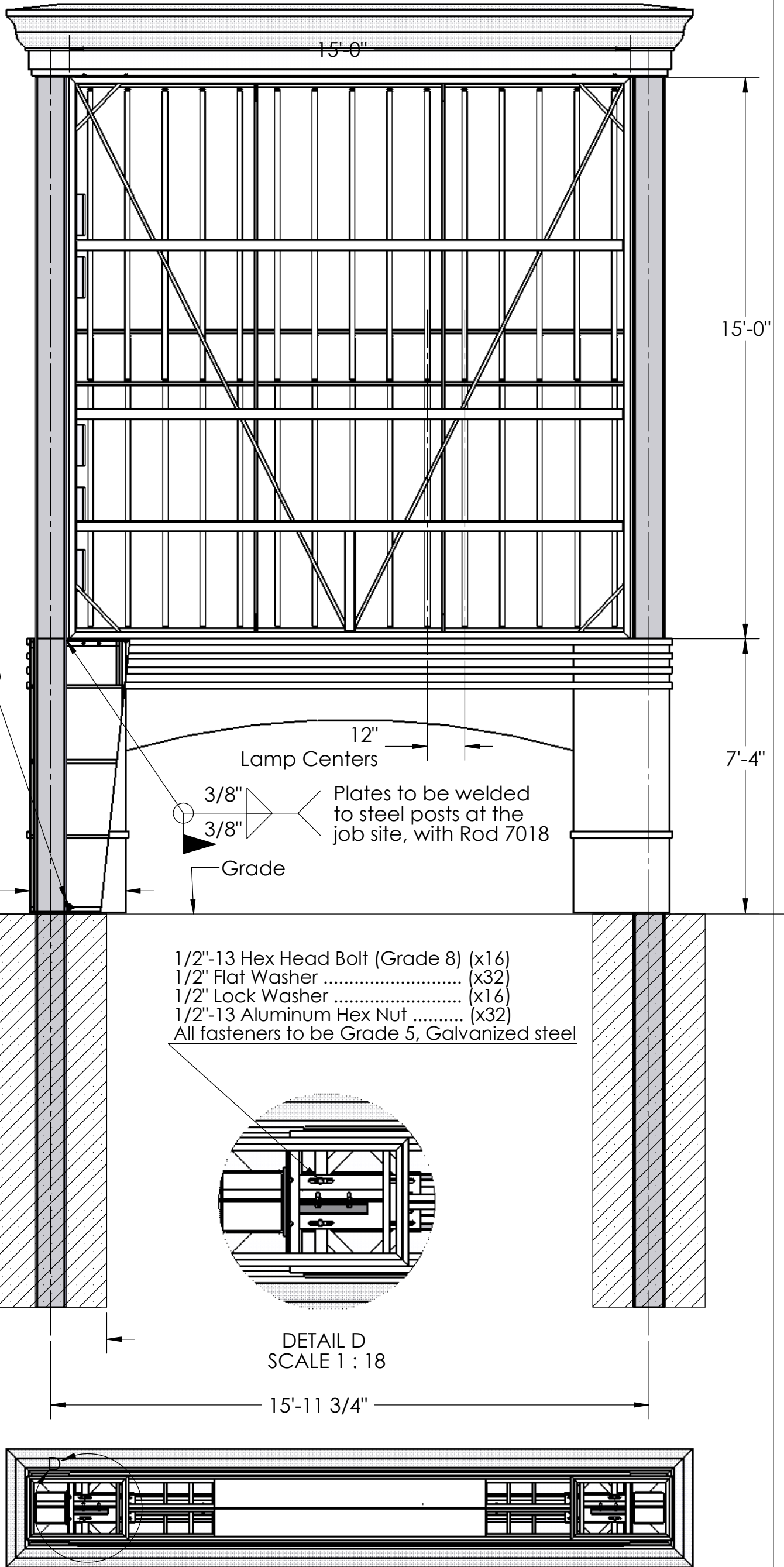
DIMENSIONS ARE IN INCHES		NAME	DATE	<b>Designed exclusively for:</b> <b>CYPRESSWOOD LANDING</b>  <b>Title:</b> <b>PYLON SIGN #2</b>
TOLERANCES:		MOHSEN	03/01/06	
FRACTIONAL ±		CHECKED		
ANGULAR: MACH ± BEND ±		ENG APPR.		
TWO PLACE DECIMAL ±		MFG APPR.		
THREE PLACE DECIMAL ±		Q.A.		COMMENTS:
MATERIAL	--			
NEXT ASSY	USED ON			
FINISH	--			
APPLICATION	DO NOT SCALE DRAWING			

SIZE	DWG. NO.	REV.
B	C7559-B-00-00	A
SCALE: 1:30	WEIGHT:	SHEET 1 OF 2



PROPRIETARY AND CONFIDENTIAL

This is an original unpublished drawing which is the sole and exclusive property of Sparkle Sign Company, Inc. and is protected under the copyright laws of the United States of America. It was created in conjunction with a project proposed by Sparkle Sign Company, Inc. It is not to be reproduced, duplicated, shown, exhibited, or physically re-created in whole or in part by any individual, group, organization, or entity without the written permission of an officer of Sparkle Sign Company, Incorporated.



Plates to be welded to steel posts at the job site, with Rod 7018

3/8"  
3/8"

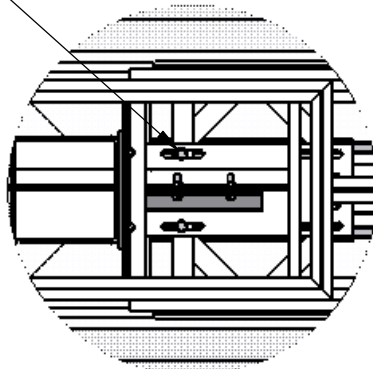
12"  
Lamp Centers

3/8"  
3/8"  
Plates to be welded to steel posts at the job site, with Rod 7018  
Grade

2'-6 5/8"

7'-4"

- 1/2"-13 Hex Head Bolt (Grade 8) (x16)
- 1/2" Flat Washer ..... (x32)
- 1/2" Lock Washer ..... (x16)
- 1/2"-13 Aluminum Hex Nut ..... (x32)
- All fasteners to be Grade 5, Galvanized steel

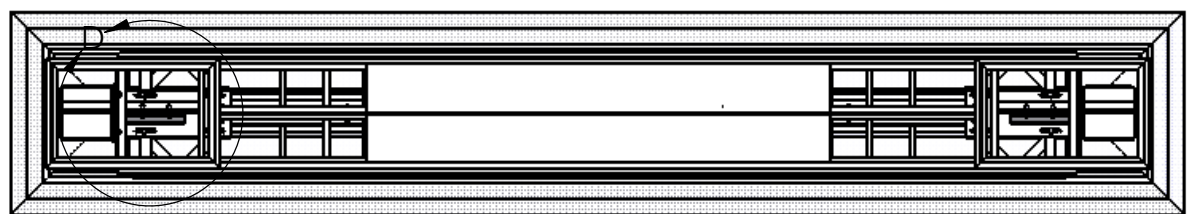


DETAIL D  
SCALE 1 : 18

10'-6" Pier

3'-0" Pier

15'-11 3/4"



		DIMENSIONS ARE IN INCHES TOLERANCES: FRACTIONAL ± ANGULAR: MACH ± BEND ± TWO PLACE DECIMAL ± THREE PLACE DECIMAL ±		NAME	DATE
		MATERIAL		MOHSEN	03/01/06
		FINISH			
NEXT ASSY	USED ON	COMMENTS:			
APPLICATION	DO NOT SCALE DRAWING				

Designed exclusively for: <b>CYPRESSWOOD LANDING</b>		
Title: <b>PYLON SIGN #2</b>		
SIZE <b>B</b>	DWG. NO. <b>C7559-B-00-00</b>	REV. <b>A</b>
SCALE: 1:36	WEIGHT:	SHEET 2 OF 2